

Hudson DART

How to start a community
DISASTER ANIMAL RESPONSE TEAM

Eva Ryden, PhD, DVM

Learn about disaster response

- Attend meetings (MRC, SMART, other)
- Learn who is who and who does what
- Get the big picture

Review ICS-100 and NIMS-700

- Your community may require certificates of completion
- In either case these are useful documents to review

Get to know the officials in your community

- EMD Emergency Management Director
 - Usually Fire Chief
 - Sometimes Police Chief
- Your ACO Animal Control Officer
- Your local veterinarian
- Other important officials
 - Board of Health/MRC Volunteer Coordinator
 - Superintendent of Schools

Your community MRC

- Some communities do not have an active MRC
- Hudson DART has a volunteers from Berlin and Stow
- Stow has an active MRC and emerging DART
 - Stow DART is learning from Hudson DART and Volunteering with Hudson DART

Recruit Volunteers

- Advertise in local news (Action Unlimited)
- Create and distribute a flier
- Write an article for your local newspaper
- Your local MRC is a good source for volunteers
- Create a web site

Educate the pet owning public

- Distribute fliers about your local DART
 - PetCo
 - PetSmart
 - Fire Station
 - Police Station
 - At suitable events for ex. CaRMaH
 - Cat Rescue of Marlborough and Hudson
 - At town rabies vaccination clinics

Reserve vendor space Hudson Summer Fest

- Hudson DART has a had a table for 2 years
- Talk to people about emergency preparation
- Hand out fliers about your DART

Hudson Summer Fest June 2013





HUDSON DART

WHEN YOU GO – THEY GO (credit SMART)

- **DON'T LEAVE HOME WITHOUT THEM!**
HUDSON DART
Hudson Disaster Animal Response Team
is working with SMART
with Hudson MRC and with Region 4A MRC
to provide shelter for pets and their owners in case
evacuation from their home is necessary

Hudson Summer Fest June 2014

- This was our second year at the Summer fest.
- We recruited 3 new volunteers



Water for thirsty, warm dogs

- Do things to attract attention
- In 2015 we plan to have a banner
- Educate the pet owning public



Training of Volunteers

- Monthly meetings to discuss issues
- Mock deployments
- We have had 4 mock deployments
- Two in 2013 and two in 2014
- Held at Yankee Golden Retriever Rescue
YGRR

Our first Mock Deployment May 2013

- Held at Yankee Golden Retriever Rescue YGRR
- YGRR has been our resource for
 - Very competent Animal Care Volunteers
 - Most of our supplies
 - Our space for meetings
 - Our space for Training
 - **THANK YOU YGRR**

Our Mock Deployment in May 2013

- We practiced
 - Set-up cages and crates
 - Intake procedures
 - Filling in forms using SMART forms from the SMART Shelter Manual
 - Used our own pets
 - Some volunteers act as evacuees















Whose duck?





The rabbit rack

A rack with 6 cages we got as a donation
from

Jack Metterville

Director of Sales

LABEX of Massachusetts

100 Grove Street

Worcester, MA 01605

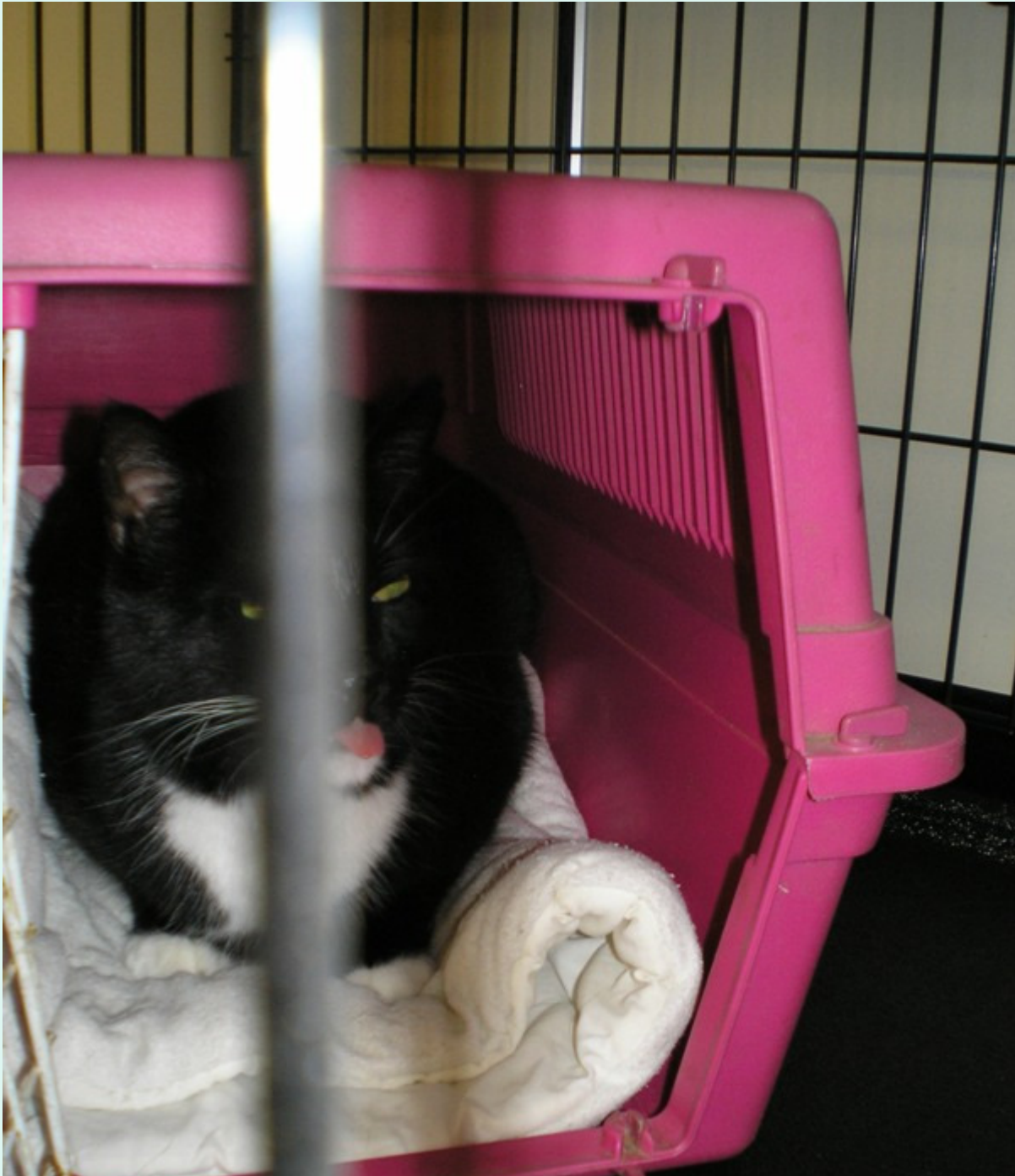
THANK YOU LABEX

Cat care in the co-shelter

- Make sure cat does not get loose
- Place cat in crate LARGE enough to hold
 - Carrier
 - Litter pen
 - Food dish
 - Water dish
 - Separate cat area from dog area







Size of crates

- Place pets in large enough crates for them to move around comfortably, lie down and contain all their needs
- They will need to spend almost all their time in the crates
- Note that in the following photos the crates are too small for these dogs



Document on crates

- These documents identify
 - the pet
 - the owner
 - List food preferred and any meds
 - For dogs document when they were walked and
 - Urine and bowel movement produced

Crate large enough to hold large dog

- The following photo shows a large dog (60 lbs)
- Owner brought own food, dishes, blanket and veterinary records



Mock Deployment November 2014

- We had 15 human participants this year as compared to 8 last year. We had 7 pets participating this year as compared to 3 last year. Because of the larger gathering, we ran into a problem that we have not had before, i.e. congestion of evacuees and very poor traffic flow.





Evacuees filling in forms

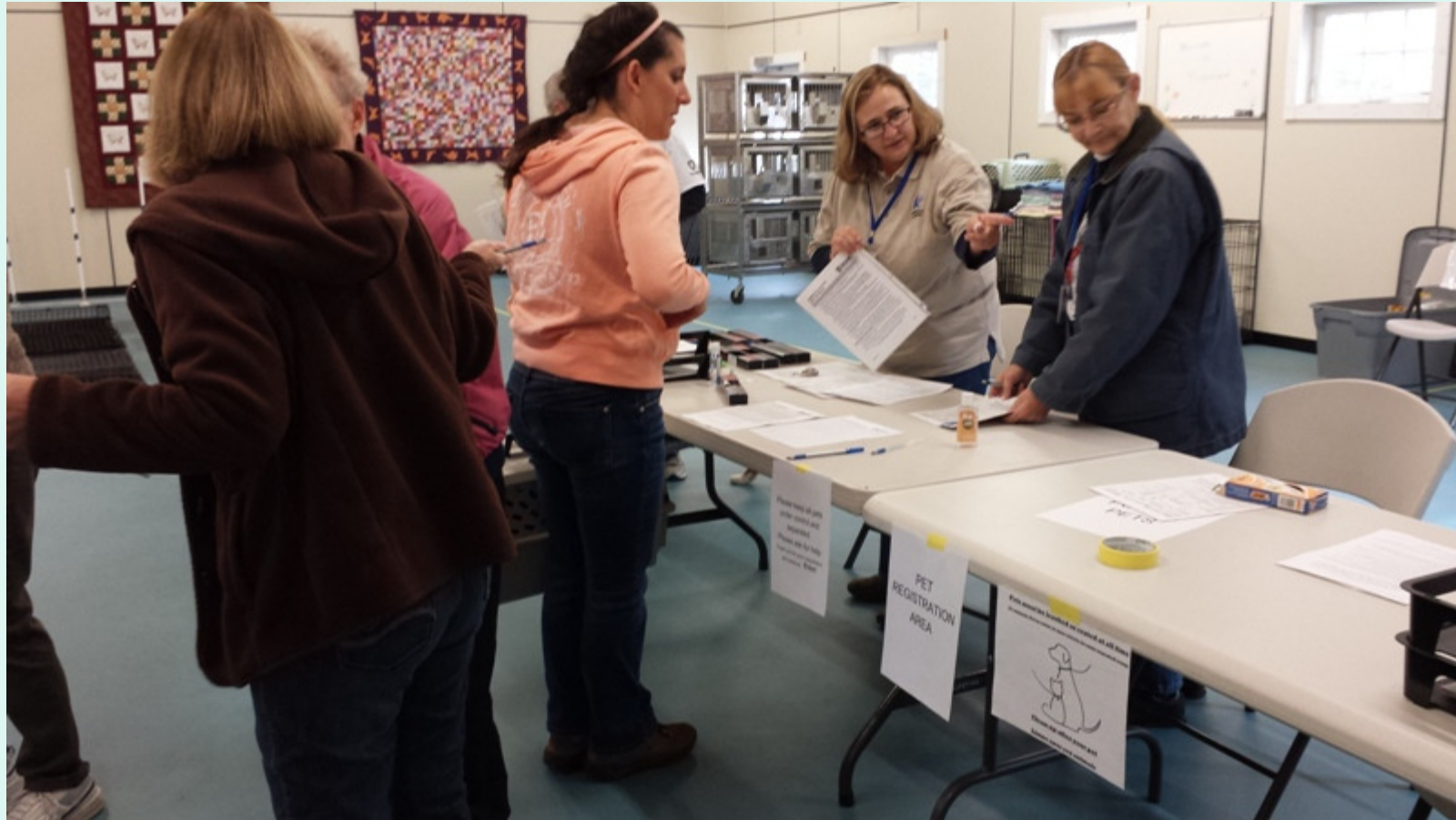




Registration and evacuees



Sit down, please!



Provide enough chairs for evacuees to sit down

- These slides show too much crowding in a small area.
- Next time we will separate people and pets better and
- Have stools for evacuees to sit on while they register their pets and talk to the Pet Intake Registrar (volunteer)

What is my job?





A photo of owner and pet together

- We used a Polaroid camera to take a photo of pet and owner.
- These photos are then tacked to the intake form.
- These photos ensure that each owner leaves with the correct pet when shelter is closed
- Cats are usually safer staying in their carriers









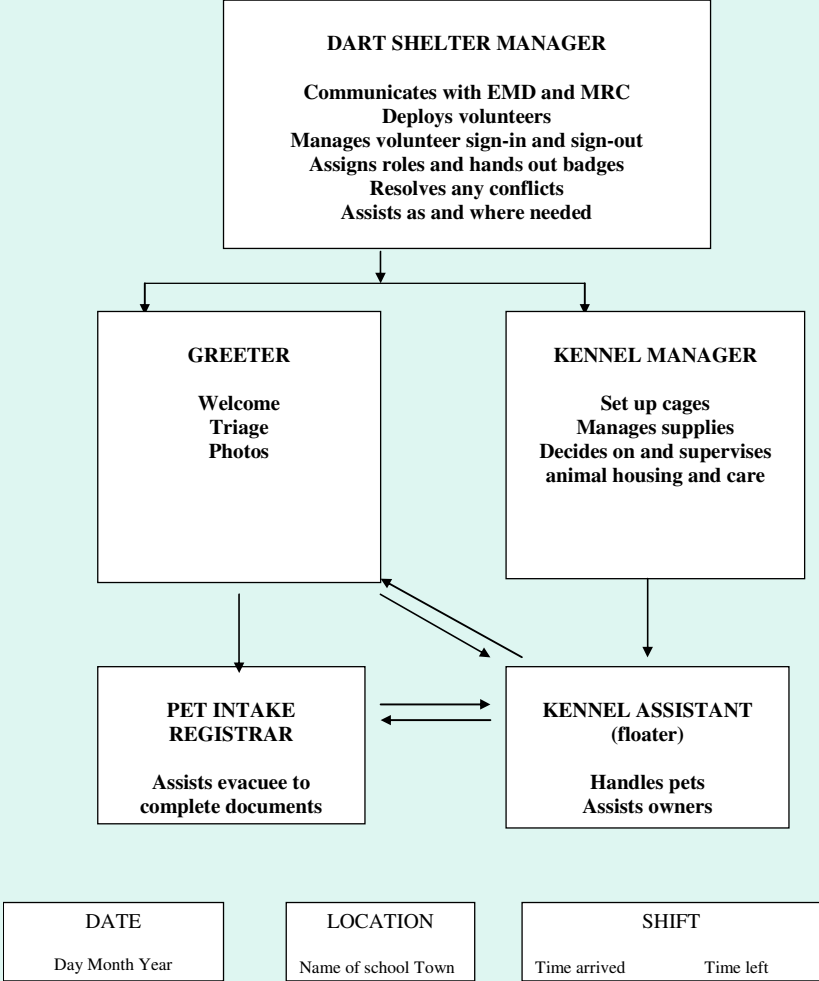




Back to ICS-100

- Organization is very important
- This intake was a bit messy
- ICS-100 describes command structure
- Each situation requires its own command structure depending upon size and function
- Hudson DART command structure is fairly simple. Each volunteer will have a tag identifying his or her function

Hudson DART Shelter Command Structure



Emergency preparation

- Educate the pet owning public
 - SEE FLIER
- When to prepare – BEFORE evacuation
- Where to go
 - friends or family, pet hotel, co-shelter
- What to bring
 - Carrier/leash, food, meds, vaccination records (incl. rabies), photo, blanket or toy, WATER

Hudson DART home page

- <https://sites.google.com/site/hudsonmrcdart/home>
- THANK YOU. QUESTIONS?